

HONDA VFR800FI ABS 2002~2006 (high pipes).

Parts list for MCS 4440/1 kit

For bikes with type 1 (un-sealed) speedometer sender connectors.

<u>Item</u>	<u>Qty</u>	<u>Part Number</u>	<u>Description</u>
1	1	MCSU 400C	Computer
2	2		Form mounting tape
		<u>MCS 4442</u>	<u>Vacuum actuator assembly</u>
3	1	MCS 574	Vacuum actuator
4	1	MCS 574D SP	Solenoid housing dust cover
5	1	MCS 4442A	Actuator bracket
	3		6g x 1/2" self tap screw
	1		6g x 3/8" pan head self tap screws
6	1	MCS 574F	Rubber grommet
7	1	MCS 574E SP	Diaphragm housing dust cover
8	1		M6 x 25 plated bolt
9	2		6mm plated flat washers
10	1		M6 Nyloc nut
11	1	MCS 032	Vacuum stop valve
12	1	MCS 031	Vacuum 'T' piece
13			4mm Vacuum hose
14	1	MCS 4441	Wiring loom (type 1 un-sealed speed sender connectors)
a			Computer plug (26 pin)
b			Fuse holder (3 amp fuse)
c			Tach sensor wire (yellow wire)
d			Speed sensor connectors (co-axial wire)
e			Actuator plug (4 pin)
f			Power & brake sensor wires (orange and grey wires)
g			Ground connector (black wire)
h			Neutral sensor wire (blue wire)
i			Control switch plug (6 pin)
		<u>MCS 4094</u>	<u>Control switch assembly</u>
15	1	MCS 820	Control switch
16	1	MCS 830A	Switch bracket
	4		4 gauge x 1/2" pan head self tap screw
	1		100mm cable tie
17		<u>MCS 4445</u>	<u>Cable Interface Unit (CIU) assembly</u>
18	1	MCS 4445A	CIU housing
19	1	MCS 003F	Actuator spool
20	1	MCS 4446	Dual spool
21	1	MCS 003H	Bush
22	1	MCS 003K	End Cap
23	1		M5 x 50 countersunk metal thread screw (pivot bolt)
24	1		M5 Nyloc nut
25	1		5mm plated flat washer
26	1		M4 x 10 pan head screw (actuator cable retainer)
27	1	MCS 4445B	CIU mount bracket
28	1		M6 x 30 bolt
29	1		6mm flat washer

30	1	MCS 300	Carburettor cable
	10		100mm cable ties
	10		150mm cable ties

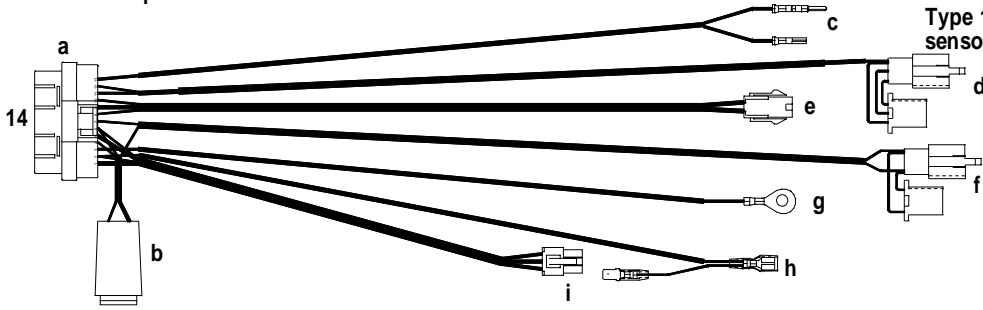
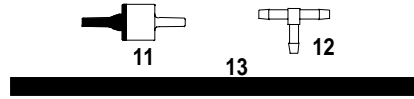
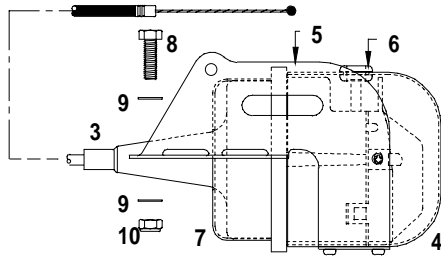
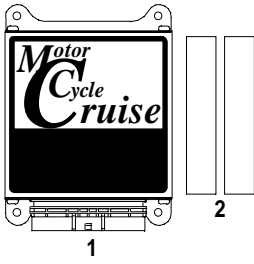
Information, Set up and Operation Manual
 Operation and User Manual
 Installation Manual
 Trouble shooting guide

Electrical terminals supplied for Universal Wiring Loom (ONLY supplied if Custom Loom is NOT supplied)

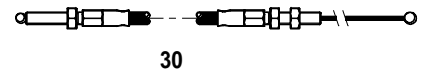
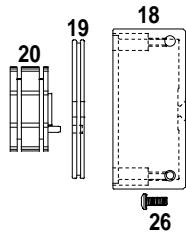
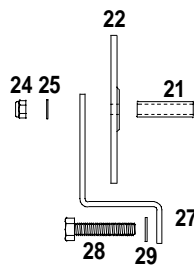
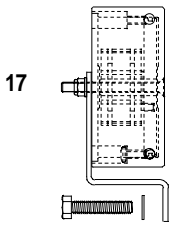
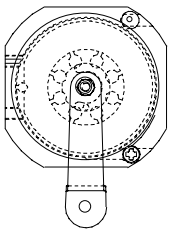
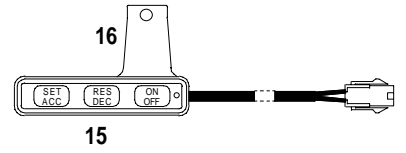
1	JD022	Brake switch connector 3 way
3	H2858	Terminals for above
1	JD023	Brake switch connector 3 way
3	H3739	Terminals for above

Type 1 un-sealed speed sensor connectors

1	JD022	Speed sensor connector 3 way
4	H2858	Terminals for above
1	JD023	Speed sensor connector 3 way
4	H3739	Terminals for above
10cm		Pink hook up wire
10cm		Green hook up wire
10cm		Black hook up wire
10cm	HST6	Heat shrink tube
2	H25104	Tach sensor tab terminal (male)
2	H25107	Tach sensor receptacle terminal (female)
2	H1527	Splice terminal
10cm	HST3	Heat shrink tube
10cm	HST6	Heat shrink tube
2	H2590	Clutch switch receptacle terminal
1	H2088	Insulator for above
2	H2571	Clutch switch tab terminal
1	H2805	Insulator for above
2	H1863	6mm ring terminal (ground connection)
20	AMP 3-1447221-4	Computer plug terminals
2	AMP 4-1437284-3	Computer plug blanking plugs



Type 1 speed
sensor plugs



30